



For Lease – Office

Riverland Bank Building

700 Seville Drive – Jordan, Minnesota



Property Features

- Attractive brick building – newer construction
- Class A finishes
- Jordan's finest office address
- Easy access via Highway 169 and County Road 282
- Suites ranging in size from 357 to 2,650 square feet
- Monument signage available for all tenants; building signage available for anchor tenant



For Information Contact:
Scott Schmitt
763.479.5636
sschmitt@shingobee.com

No warranty or representation, express or implied, is made as to the accuracy of the information contained herein, and same is submitted subject to errors, omissions, change of price, rental, or other conditions, withdrawal without notice, and to any specific listing conditions, imposed by our principals.

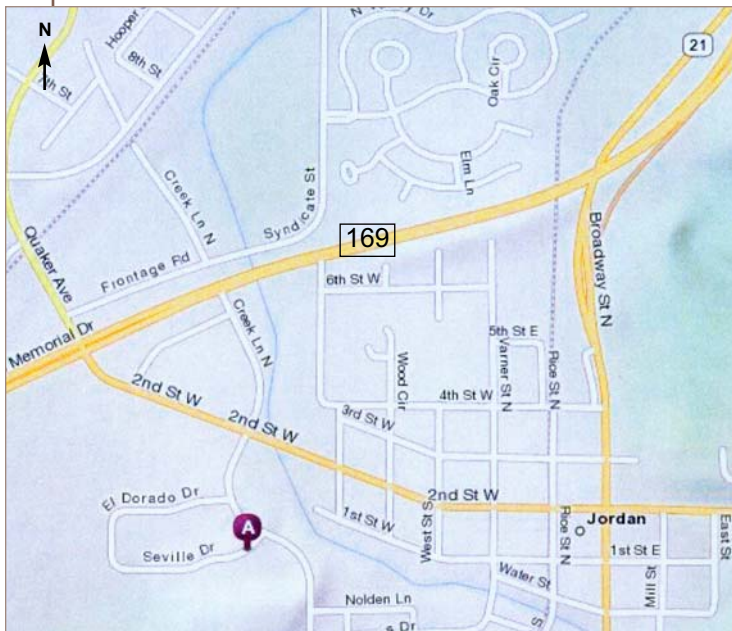
 **Shingobee**
Integrity. The Cornerstone.



For Lease – Office

Riverland Bank Building

700 Seville Drive – Jordan, Minnesota



Demographics

	<u>1 mile</u>	<u>3 mile</u>	<u>5 mile</u>
2010 Population	4,429	7,182	9,086
2010 Average Household Income	\$70,708	\$76,667	\$80,328

For Information Contact:
Scott Schmitt
763.479.5636
sschmitt@shingobee.com

No warranty or representation, express or implied, is made as to the accuracy of the information contained herein, and same is submitted subject to errors, omissions, change of price, rental, or other conditions, withdrawal without notice, and to any specific listing conditions, imposed by our principals.

